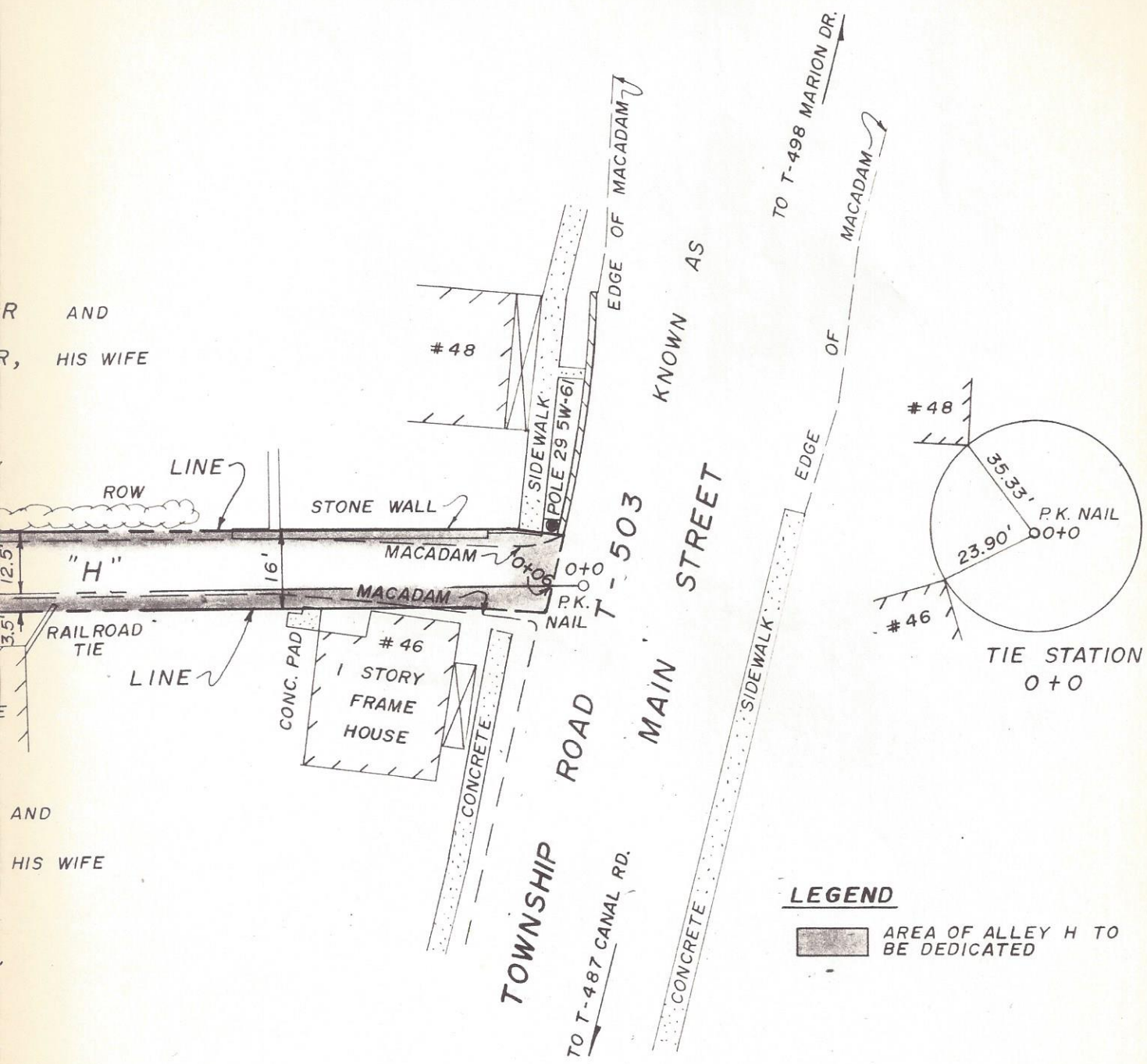


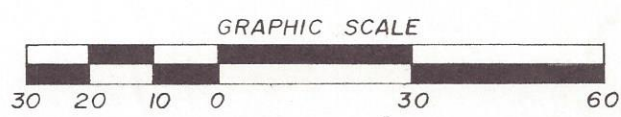
R AND
R, HIS WIFE

AND
HIS WIFE



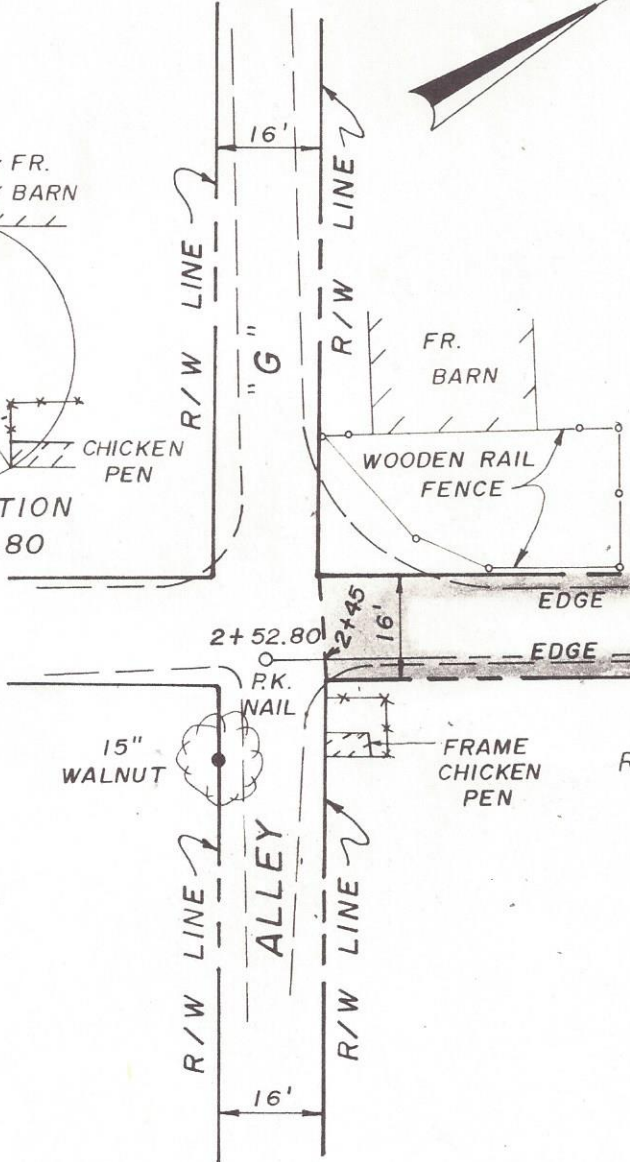
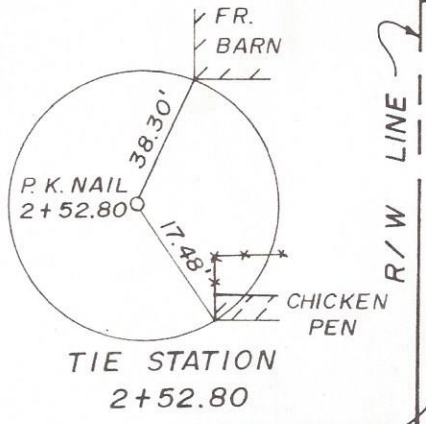
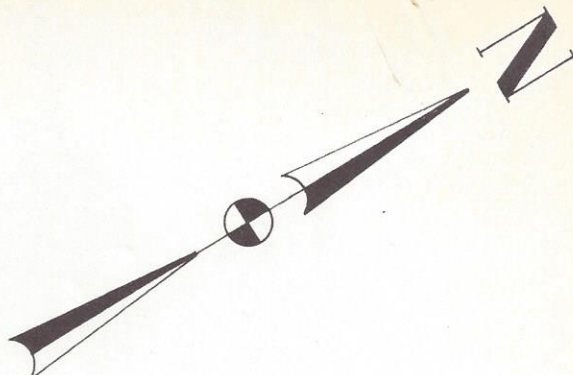
LEGEND

 AREA OF ALLEY H TO BE DEDICATED



N.B. 984-14
N.B. 528-72

<p>MARION TOWNSHIP BERKS COUNTY, PENNSYLVANIA</p>		<p>SPOTTS, STEVENS and McCOY, Inc. CONSULTING ENGINEERS WYOMISSING, PENNSYLVANIA 19610</p>	
		<p>MJC MADE</p>	<p>APPROVALS <i>[Signature]</i></p>
<p>STOUCHSBURG ALLEYS DEDICATION PLAN ALLEY "H"</p>		<p>1" = 30' SCALE</p>	<p>7008-001-B-001 DRAWING NUMBER</p>
			<p>REV.</p>



CURTIS G. HIMMELBERG
 SHIRLEY A. HIMMELBERG

D. B. V. 1557 - 13

RIGHT - OF - WAY HEDGE

ALLEY

RIGHT - OF - WAY 1 STORY FRAME GARAGE

WILLIAM G. BARNHART
 SARAJEAN K. BARNHART,

D. B. V. 1634 - 565

NOTEBOOK	BY	DATE
SURVEYED	E. SHEETZ	7/26/79
PLOTTED	M. BURKHOLDER	8/11/79
PLOTTING	CHKD.	

NOTES: 1) SEE SPOTTS, STEVENS & MCCOY DRAWING NO. 7008-01-C-002 FOR ALLEY "G" DEDICATION PLAN.
 2) SEE SPOTTS, STEVENS & MCCOY DRAWING NO. 7008-009-D-001 FOR RIGHT OF WAY INFORMATION FOR TOWNSHIP ROAD T-503. STATION 0+0 ON THIS DRAWING EQUALS SURVEY BASELINE STATION 19+12.41 ON DRAWING 7008-009-D-001.